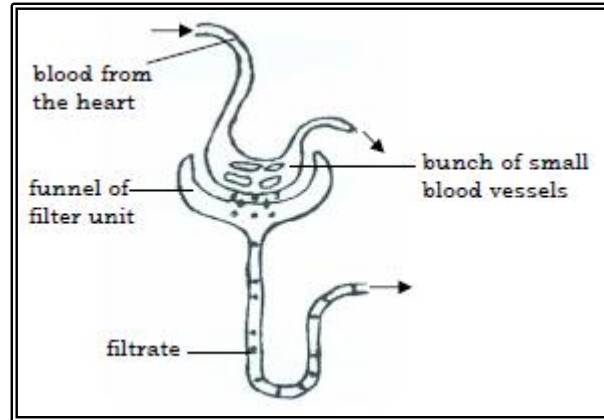


MINISTRY OF EDUCATION, HERITAGE AND ARTS
YEAR 10 BASIC SCIENCE
REVISION WORKSHEET 8

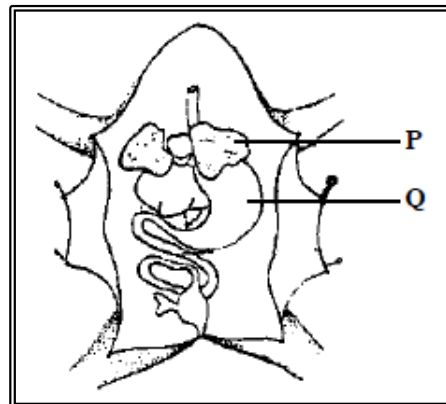
Write the answers to the following questions in your exercise/activity books.

1. The diagram given below shows a filtering unit in an organ of the human body.



(Source: <https://quizlet.com/>)

- i. Name the filtering unit given. **(1 mark)**
ii. Name the organ where these filtering units are found. **(1 mark)**
2. A student dissected a toad. The diagram given below shows the internal organs of the toad after it was dissected.



(Source: <http://int.search.tb.ask.com>)

- i. Name the organs labelled **P** and **Q**. **(2 marks)**
ii. State the function of the organs labelled **P** and **Q**. **(2 marks)**

The End